



Specialized Equipment  
for Specialty Healthcare

## TC SERIES ENT TREATMENT CABINETS



- Main Phone: +1 (317) 804-1810
- Email: [Gabe@gecegsurgical.com](mailto:Gabe@gecegsurgical.com)



# TC SERIES TREATMENT CABINETS

## SIMPLIFY DELIVERY OF CARE

WITH A CUSTOM CABINET  
CONFIGURATION  
COUPLED WITH AN MTI CHAIR  
TAILORED TO MEET YOUR NEEDS

Rugged construction combined with premium materials and contemporary ergonomic engineering help make the TC Series Treatment Cabinets the finest on the market today.

All MTI cabinets are latex safe (latex-free) to reduce the possibility of allergic reactions.

TC Series Treatment Cabinets are offered in five basic models with over a million standard option combinations to satisfy every possible



464 Procedure/Exam Chair with  
TC100C Cabinet in Xanadu

# Cabinet Comparison



	<b>TC100A</b>	<b>TC100B</b>	<b>TC100C</b>	<b>TC100D</b>	<b>TC75</b>
Style	Sit-down	Stand-up	Sit-down	Stand-up	Sit-down
Height	33.5"	41.5"	33.5"	41.5"	33"
Depth Options	18" or 21"	18" or 21"	21"	21"	18" or 21"
Drawers	5	6	5	6	5
Doors	2	2	3	3	2
Width	25"	25"	35.5"	35.5"	25"
Canister Options	3" x 5" and 4" x 5"	3" x 5" and 4" x 5"	3" x 5" and 4" x 5"	3" x 5" and 4" x 5"	3" x 5" and 4" x 5"
Backwall Options	15" or 4"	15" or 4"	15" or 4"	15" or 4"	15" or 4"
Glassware Options	Up to 4 Atomizer, Powder Blower, Syringe, and Others	Up to 4 Atomizer, Powder Blower, Syringe, and Others	Up to 4 Atomizer, Powder Blower, Syringe, and Others	Up to 4 Atomizer, Powder Blower, Syringe, and Others	Up to 4 Atomizer, Powder Blower, Syringe, and Others
Pressure Systems	Internal or Central Pressure	Internal or Central Pressure	Internal or Central Pressure	Internal or Central Pressure	Internal Pressure
Vacuum Systems	Standard or High Volume Internal Vacuum or Central Vacuum	Standard or High Volume Internal Vacuum or Central Vacuum	Standard or High Volume Internal Vacuum or Central Vacuum	Standard or High Volume Internal Vacuum or Central Vacuum	Standard or High Volume Internal Vacuum Counter Top Recessed
Instrument Handle Options	Counter Top Recessed Cordless Side Mounted Cordless Side Mounted Corded	Counter Top Recessed Cordless Side Mounted Cordless Side Mounted Corded	Counter Top Recessed Cordless Side Mounted Cordless Side Mounted Corded	Counter Top Recessed Cordless Side Mounted Cordless Side Mounted Corded	Cordless Side Mounted Cordless Side Mounted Corded
Instrument Options	Otosopes Macroview Transilluminators Insufflator Bulbs	Otosopes Macroview Transilluminators Insufflator Bulbs	Otosopes Macroview Transilluminators Insufflator Bulbs	Otosopes Macroview Transilluminators Insufflator Bulbs	Otosopes Macroview Transilluminators Insufflator Bulbs
Finish Options	Laminate or Stainless Steel	Laminate or Stainless Steel	Laminate or Stainless Steel	Laminate or Stainless Steel	Crystal Laminate
Counter top Options	Laminate or Solid Surface	Laminate or Solid Surface	Laminate or Solid Surface	Laminate or Solid Surface	Crystal Laminate
Hoses Location Options	Left or Right Hand	Left or Right Hand	Left or Right Hand	Left or Right Hand	Left or Right Hand
Waste Drop	No	No	Yes	Yes	No
More Details	<a href="#">pg. 6</a>	<a href="#">pg. 6</a>	<a href="#">pg. 7</a>	<a href="#">pg. 7</a>	<a href="#">pg. 12</a>

# TC100 TREATMENT CABINET STANDARD FEATURES

- Industrial rated pressure and vacuum system
- Control panel with easy to use single switch vacuum/pressure operation and auxiliary switch control
- Five drawers, one with adjustable dividers and two with molded inserts. All drawers have a self closure feature and drawer fronts use rugged 3 mm molded edge banding for cleanliness and durability.
- Rounded and molded side panels and edges offer style and functional safety as well as noise attenuation
- Concealed heavy-duty door hinges
- Dual accessory electrical outlets located inside cabinet
- Lower cabinet bumper for safety and retention of cabinet beauty
- Total component modularity with plug and play components aid in easy component replacement/repair
- Latex safe (latex-free)
- The TC100C and TC100D add a waste drop hole to aid in the safe sterile disposal of waste.
- Configure your counter top with two 3" x 6" (7.6 cm x 15.2 cm) stainless steel canisters or one 4" x 5" (10.2 cm x 12.7 cm) and one 3" x 6" (7.6 cm x 15.2 cm) stainless steel canisters.
- Configure your counter top with up to four small application bottles or up to three small application bottles and one syringe.
- Dual rechargeable instrument wells or transformer with corded handles
- Choice of two instrument heads
- Choice of Solid, Pattern, or Wood Grain laminate colors and crystal or black counter top and backwall or upgrade to a solid surface counter top. Optionally upgrade to a stainless steel exterior. See page 8 for color options. Special colors are available.
- Right or left hand hose dexterity
- Many other additional options



## TC100A

---

The TC100A cabinet is MTI's five-drawer sit-down treatment cabinet. It is available in two cabinet depths; 18" (45.7 cm) Slim Line and 21" (53.3 cm) Standard.



## TC100B

---

The TC100B cabinet is a stand-up version of the TC100A. The TC100B model adds an extra 7.5" drawer to provide extended height for those who prefer to stand during operation. It is available in two cabinet depths; 18" (45.7 cm) Slim Line and 21" (53.3 cm) Standard.





## TC100C

The TC100C cabinet is a wider version of the TC100A. The extended width of the TC100C adds 10.5" of counter top space with a waste drop hole and a side mounted storage compartment, with one adjustable shelf and can house a waste receptacle. Optionally, the waste drop hole may be eliminated for additional bulk storage. It is available in a cabinet depth of 21" (53.3 cm).



## TC100D

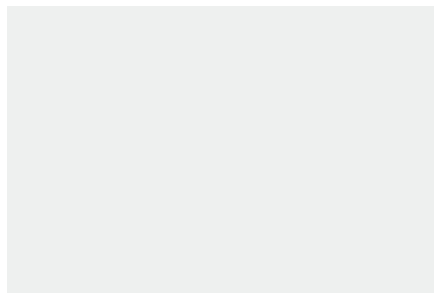
The largest of all treatment cabinets, the TC100D combines the larger work space and waste drop hole of the TC100C cabinet with the extended height of the TC100B for the ultimate in treatment cabinet size. The TC100D is standard with two adjustable shelves in the bulk storage compartment and can house a waste receptacle. Optionally, the waste drop hole may be eliminated for additional bulk storage. It is available in a cabinet depth of 21" (53.3 cm).

# TC100 CABINET FINISHES

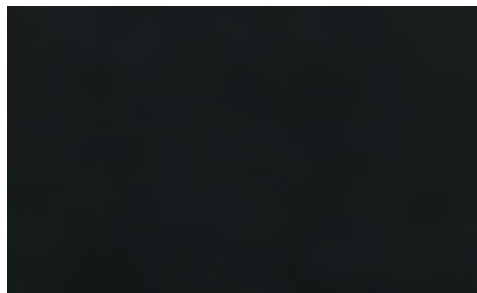
## Counter Top Color Options<sup>1</sup>



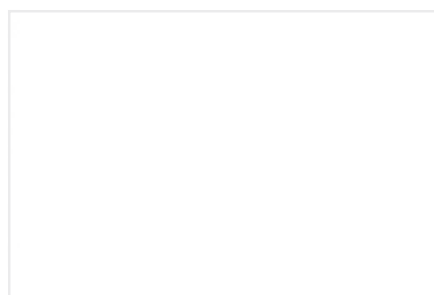
Brush Finished Satin Nickel Handles



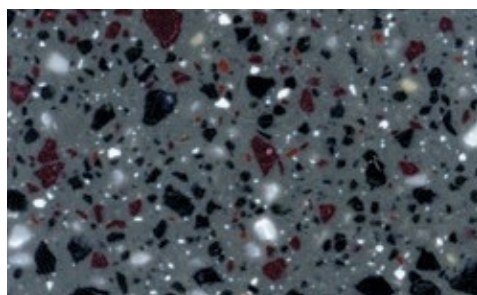
Crystal Laminate



Black Laminate

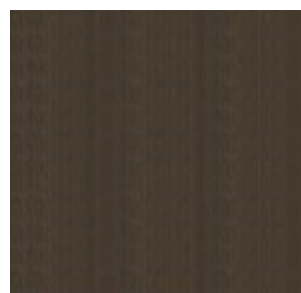


Frosty White Solid Surface<sup>2</sup>

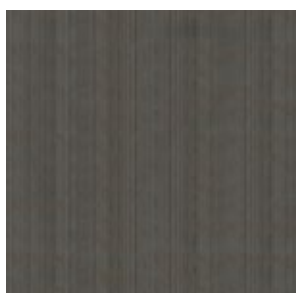


Midnight Melange Solid Surface<sup>2</sup>

## Door and Drawer Front Standard Color Options<sup>1</sup>



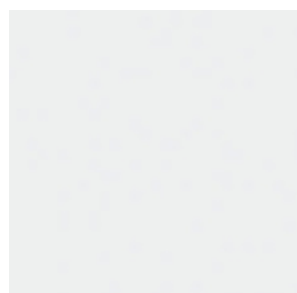
Xanadu<sup>3</sup>



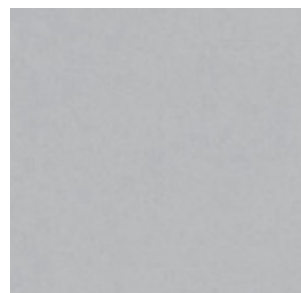
Low Line<sup>3</sup>



Classic Linen



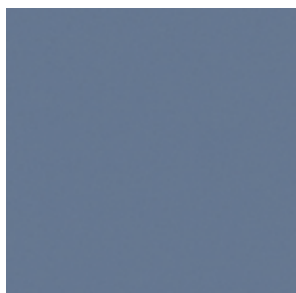
Crystal



Dove Grey



Shadow



Brittany Blue



Stainless Steel<sup>2,4</sup>  
(includes cabinet sides)

<sup>1</sup>Note: Due to printing processes, actual colors will vary.

<sup>2</sup>Additional upgrade charges apply

<sup>3</sup>

<sup>3</sup>Only available in Standard Depth cabinets. Includes cabinet sides and backwall.

<sup>4</sup>

<sup>4</sup>Includes cabinet sides



# TC100 CABINET OPTIONS

## Dexterity



Left-hand Hoses



Right-hand Hoses

## Pressure and Vacuum Systems



Internal Pressure and Vacuum System



Internal Pressure and High-Volume Vacuum System

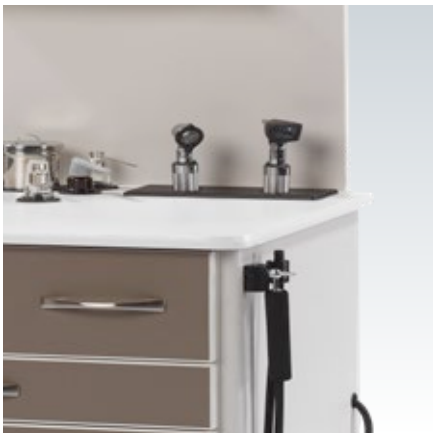


Central Pressure and Vacuum System  
(connect rear of cabinet to central systems)



Vacuum Unloading System (quickly relieves vacuum pressure while using small instrument tips during rapid and repetitive on/off operation of the vacuum system)

## Instrument Handles



Counter Top Recessed Handles and Charger



Side Mounted Handles and Charger



Side Mounted Corded Handles

# Counter Top Configurations

Configure your counter top with two canisters or one 4" x 5" and one 3" x 6" canisters and up to four small application bottles or up to three small application bottles and one syringe.



One application bottle



Two application bottles



Three application bottles



Four application bottles



Three application bottles and one syringe

# Backwalls



4" (10.2 cm) Backwall



15" (38.1 cm) Backwall with Stainless Steel Shelf



15" (38.1 cm) Backwall with Bottle/Canister Tower



15" (38.1 cm) Backwall with Glove and Tissue Dispensers



15" (38.1 cm) Backwall Medicine Lock Box with adjustable shelf



## Mirror Warmers



Counter Top Recessed Glass Bead Mirror Warmer



Backwall Mounted Glass Bead Mirror Warmer (right side only)



Mirror Warming Drawer

## Additional Options



Lift-up Shelf (12" x 12" or 12" x 18") (30.5 cm x 30.5 cm or 30.5 cm x 45.7 cm)



Lock one drawer or one door



Locks all drawers except one of either top drawers



Dirty Instrument Tray



Foot Control with Pressure and Vacuum Operation



Endoscope Cold Storage Tubes (Multiple sizes and mountings)



4-Port LED Light Source



Dual Suction Hoses provides access to suction on both sides of the cabinet



# TC75 TREATMENT CABINET STANDARD FEATURES

The TC75 cabinet is ideal for satellite offices or those physicians who do not need handles and instruments, canisters, and bottles, but still need a quality cabinet with a suction and pressure systems.

- Crystal laminate color
- Choice of Standard 21" (53.3 cm) depth or Slim Line 18" (45.7 cm) depth models and 4" (10.2 cm) backwall
- Industrial rated pressure and vacuum system
- Control panel with easy to use single switch vacuum/pressure operation and auxiliary switch control
- Five drawers, one with adjustable dividers and two with molded inserts. All drawers have a self closure feature and drawer fronts use rugged 3 mm molded edge banding for cleanliness and durability.
- Rounded and molded side panels and edges offer style and functional safety as well as noise attenuation
- Concealed heavy-duty door hinges
- Dual accessory electrical outlets located inside cabinet
- Total component modularity with plug and play components aid in easy component replacement/repair
- Latex safe (latex-free)
- Right or left hand hose dexterity



## Optional

- Configure your counter top with two 3" x 6" (7.6 cm x 15.2 cm) stainless steel canisters or one 4" x 5" (10.2 cm x 12.7 cm) and one 3" x 6" (7.6 cm x 15.2 cm) stainless steel canisters.
- Configure your counter top with up to four small application bottles or up to three small application bottles and one syringe.
- Dual rechargeable instrument wells or transformer with corded handles
- Choice of two instrument heads



**Geceg Surgical**  
Empowering Healthcare, Enhancing Lives

**Authorized Distributor for sales, service, and support,  
Contact US :+1 (317) 804-1810**